

# PaperAir

Find My Document Quickly!



**Avision**

The Easy Solution for Paper Storage and Search!



Kid's Art



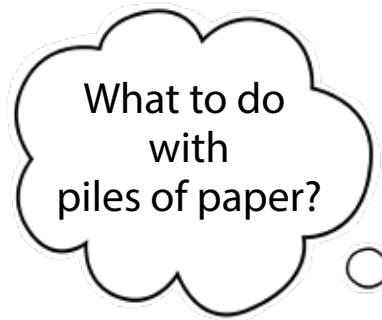
Important Document



Treasured Photos



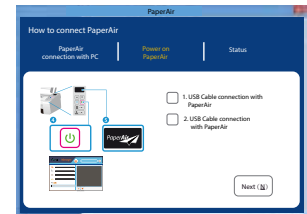
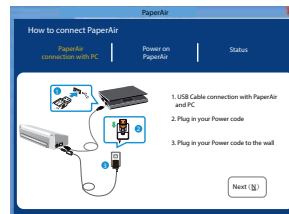
Family Recipes



# PaperAir Manager

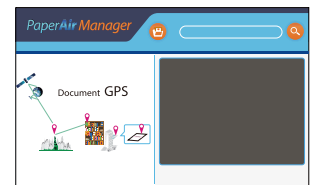
## Easy Installation

Installation is easy as a breeze by following our graphic and step-by-step installation & problem solving guide.



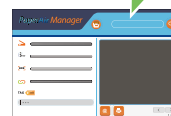
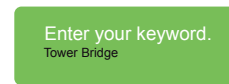
## Easy Scan

Simply load your paper to the scanner, the scanning application will be automatically launched. Just choose and press one button and the job is done!



## Easy Search

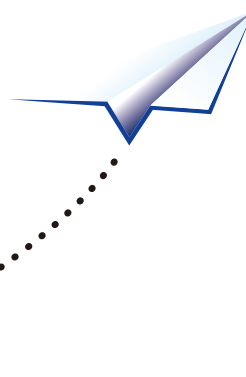
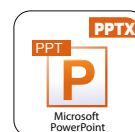
Documents can be searched by content, tag, file name over different file formats including jpeg, PDF, Microsoft Word, Powerpoint, Excel.



Choose the selected document

## Easy Destination

You can easily choose the predefined destinations including E-mail, Printer, or popular cloud servers to send out your images once scanned.



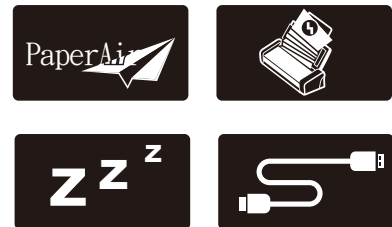
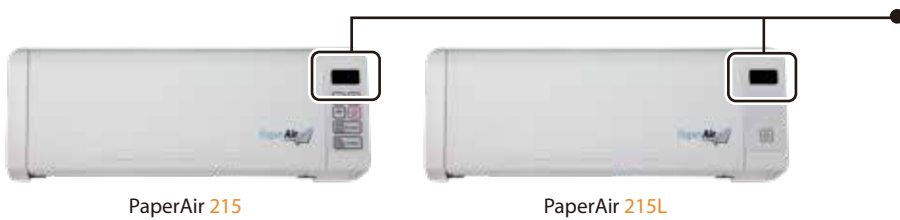
## Convenient mobile scanning (only PaperAir 215)

With a built-in Wi-Fi module, the PaperAir 215 is able to wirelessly connect to your mobile device and lets your mobile device directly instruct a scan and receive a scanned image.



## LCD screen indicates scanner status

Scanner status can be graphically or even animatedly displayed on the LCD screen for easy operation.



## Compact and Portable

At 11.8 inches with and weighting only 1.4 kg, the Avison PaperAir 215/215L incorporates a built-in automatic document feeder (ADF) and card scanner in a compact unit. With the innovative design of a foldable automatic document feeder and a front tray, the PaperAir 215/215L is easy to travel with and lets you bring productivity of batches scanning to any workplace.



## Front Loading and Front Ejecting Path

In addition to loading multiple pages from the auto document feeder, the scanner is designed innovatively with the foldable front tray to accommodate irregular sizes and weights of paper such as your paper clippings, fragile paper, or embossed cards. The straight paper path ensures consistent high image-quality and eliminates the need for clearance space behind the scanner.



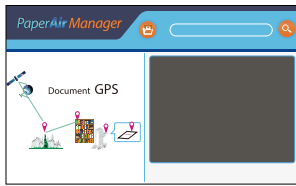
# PaperAir 215/ PaperAir 215L

## What we have bundled

The Avison PaperAir 215/ PaperAir 215L comes with a suite of powerful software applications that include With PaperAir Manager, you can create searchable PDFs, scan and send images to e-mail, printer, or other destinations with a simple press of a button.

## Avison's PaperAir Manager

-Completes your scan with a single step



## Presto! BizCard



BizCard provides a full range of contact management functions for adding business cards without typing. Use the BizCard recognition system to scan business cards, edit, and synchronize the information to the most

frequently used personal database functions for adding business cards without typing. Use the BizCard recognition system to scan business cards, edit, and synchronize the information to the most frequently



- Easily synchronize contact information to cloud storage accounts, PDA, or PIM



- Intuitive and simple user interface for

### PaperAir 215



### PaperAir 215L (Only Power Button)



Specifications	PaperAir 215/ PaperAir 215L
Paper Feeding:	ADF 20-page capacity
Scanning Technology:	Contact Image Sensor ( CIS )
Document Size:	Min. 50 x 50 mm Max. 216 x 356 mm
Scanning Speed:	20 PPM / 40 IPM (Color, A4, 200 dpi) 15 PPM / 30 IPM (Color, A4, 300 dpi)
Paper Thickness:	(ADF) 50~105 g/m <sup>2</sup> (13~28 lb.) (Front Feeder) 27~413 g/m <sup>2</sup> (7~110 lb.)
ID Card Thickness:	Up to 1.25 mm (Front Feeder)
Optical Resolution:	600 dpi
Output Resolution:	200, 300, 400 and 600 dpi
Output Formats:	B/W, greyscale, 24-bit color
File Formats:	Searchable PDF, JPEG, DOCX, XLSX, PPTX
Bundled Software:	Avison PaperAir Manager Presto! BizCard
Interface	USB 2.0 (Micro USB Port)
Power Supply:	Input: 100-240 VAC, 50/60 Hz Output: 24V, 1.5A
Power Consumption:	Operation: <24 W Ready: <7.5 W Sleep: <2.5 W Off: <0.32 W
Environmental Factors:	Operating temperature: 10°C to 35°C (50°F to 95°F) Operating humidity: 10% to 85%
Dimensions (W x D x H):	299 x 104 x 74 mm
Weight:	1.4 kg
Recommended Daily Scanning Volume:	1,000 sheets
Multi-feed Detection:	Ultrasonic Sensor (only PaperAir 215)

\* The search function is not included in the mobile application.

## System Requirements

CPU:	Intel® Core i3 (2.1GHz) or Higher
Memory:	1GB (32bit Windows) 2GB (64bit Windows)
DVD-ROM:	DVD ROM Drive
USB:	USB 2.0 Port (USB 3.0 Compatible)
Windows Operating System:	Windows XP, Vista, 7, 8.X, 10 (32 & 64 bit)

## Contents

Scanner	
Power Supply	
Quick Guide	
USB 2.0 Cable	
CD-ROM includes:	
-Avison PaperAir Manager	
-Presto! BizCard	

## Function and Package List

Model	PaperAir 215	PaperAir 215L
Function		
Ultrasonic	YES	NO
Wi-Fi	YES	NO
Adapter	Adapter	Adapter

We have endeavored to ensure that the information in this manual is accurate and that Avison is not responsible for printing or typographical errors. The above configuration is for reference only. The actual configuration (software, hardware) should be compiled with the specification described in the purchase agreement. Avison Inc. owns the intellectual property rights of the product outlook and design and the product outlook and design are subject to change. Avison reserves the right to the modification of product outlook and design. All rights reserved. All trademarks and product names mentioned in this manual are the trademarks of their respective companies. When the third party product is for reference only and Avison does not warrant these products nor is responsible for the efficiency or use of these products.